

D'ANDREA MONOD'CT

- INDEX
- СОДЕРЖАНИЕ
- SPIS TREŚCI
- REJSTRIK
- DÍŽIN

p. 240



p. 212

DIN 69893 HSK-A
CT

p. 214



ISO 26623-1 PSC
CT

p. 240



p. 216

DIN 69871 AD+B
CT

210

p. 240



p. 218

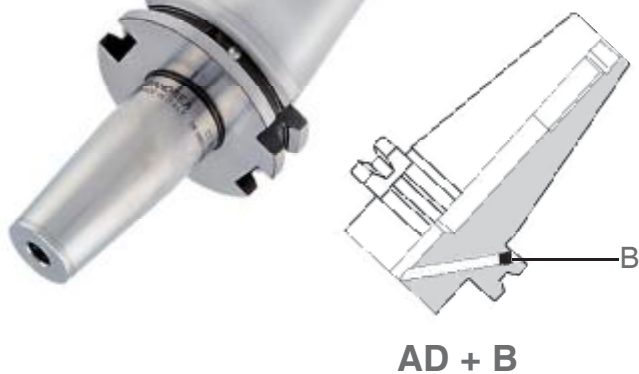
MAS 403 BT AD+B
CT



p. 220

PR CT





*Quality, precision,
strength and convenience*

- SHRINK FIT CHUCKS
- ШПИНДЕЛИ С ТЕРМИЧЕСКИМ КЛИНОВЫМ СОЕДИНЕНИЕМ
- WRZĘCIONA Z TERMICZNYM POŁĄCZENIEM KLINOWYM
- ULOŽENÍ LISOVANÉ ZA TEPLA
- SIKI GEÇME MANDRENLERİ

GB The integrated to fit chucks MONOd' CT tool holders represent an ideal solution to equip any type of machine tool with HSK 63 and 100, ISO 26623-1 PSC, DIN AD+B and BT AD+B base arbors, guaranteeing the benefits of a high quality and high precision.

RU Неразъемные держатели для инструментов с термическим клиновым соединением представляют собой идеальное решение для любого типа металлорежущих станков с основным соединением HSK 63 и 100, ISO 26623-1 PSC, DIN AD+B и BT AD+B, гарантирующее высокое качество и высокую точность.

PL Integralne uchwyty narzędziowe z termicznym połączeniem klinowym MONOd' CT są idealnym rozwiązaniem dla każdego typu obrabiarki z podstawowym połączeniem HSK 63 i 100, ISO 26623-1 PSC, DIN AD+B i BT AD+B, z gwarancją wysokiej jakości i wysokiego stopnia precyzji

CZ Uložení lisované za tepla integrované s nástrojovými držáky MONOd' CT jsou ideálním řešením pro každý typ obráběcího stroje se základním vybavením HSK 63 a 100, ISO 26623-1 PSC, DIN AD+B a BT AD+B, se zárukou vysoké kvality a vysokého stupně přesnosti.

TR MONOd' CT siki geçme entegre takım tutucuları HSK 63 ve 100, ISO 26623-1 PSC, DIN AD+B ve BT AD+B temel eklere sahip her türlü takım tezgahının donanımında ideal bir çözüm sunarak, üstün kalite ve yüksek doğruluk derecesinde avantajlar sağlar.

- SHRINK FIT CHUCKS
- ШПИНДЕЛИ С ТЕРМИЧЕСКИМ КЛИНОВЫМ СОЕДИНЕНИЕМ
- WRZECIONA Z TERMICZNYM POŁĄCZENIEM KLINOWYM
- ULOŽENÍ LISOVANÉ ZA TEPLA
- SIKI GEÇME MANDRENLERİ

DIN 69893 HSK-A63

CT

↗ 0.003

RPM 25.000

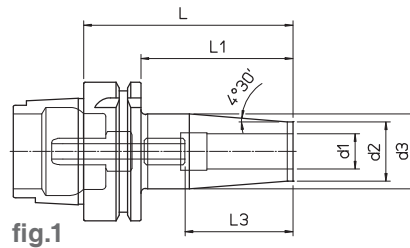


fig.1

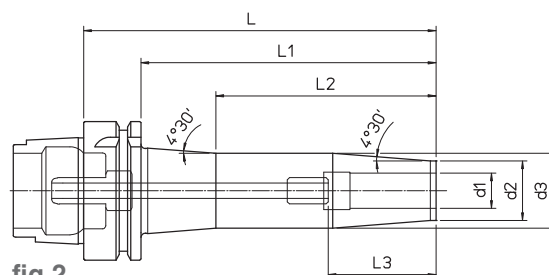


fig.2

- Supplied with coolant tube
- Содержит соединение для хладагента
- Wyposażona w złączkę do cieczy chłodzącej
- Dodávané s chladičím potrubím
- Soğutma sıvısı borusuyla tedarik edilir

HSK-A	REF.	CODE	d ₁	d ₂	d ₃	L	L ₁	L ₂	L ₃	kg	fig.
63	HSK-A63 CT06.80	71HSKA063CT0608	6	21	27	80	54	-	26 / 36	0.8	1
	HSK-A63 CT06.120	71HSKA063CT0612				120	94	1.2			
	HSK-A63 CT06.160	71HSKA063CT0616				160	134	100		1.2	
	HSK-A63 CT08.80	71HSKA063CT0808	80			54	-	0.8		1	
	HSK-A63 CT08.120	71HSKA063CT0812	120			94	1.1				
	HSK-A63 CT08.160	71HSKA063CT0816	160			134	100	1.2		2	
	HSK-A63 CT10.85	71HSKA063CT1008	85	59	-	0.9	1				
	HSK-A63 CT10.120	71HSKA063CT1012	120	94	31 / 41	1.1					
	HSK-A63 CT10.160	71HSKA063CT1016	160	134	100	1.4	2				
	HSK-A63 CT12.90	71HSKA063CT1209	90	64	-	0.9	1				
	HSK-A63 CT12.120	71HSKA063CT1212	120	94	1.1						
	HSK-A63 CT12.160	71HSKA063CT1216	160	134	100	1.3	2				
	HSK-A63 CT14.90	71HSKA063CT1409	90	64	-	0.9	1				
	HSK-A63 CT14.120	71HSKA063CT1412	120	94	36 / 46	1.1					
	HSK-A63 CT14.160	71HSKA063CT1416	160	134	100	1.4	2				
	HSK-A63 CT16.95	71HSKA063CT1609	95	69	-	0.9	1				
	HSK-A63 CT16.120	71HSKA063CT1612	120	94	39 / 49	1.1					
	HSK-A63 CT16.160	71HSKA063CT1616	160	134	100	1.4	2				
	HSK-A63 CT18.95	71HSKA063CT1809	95	69	-	1.1	1				
	HSK-A63 CT18.120	71HSKA063CT1812	120	94	1.4						
HSK-A63 CT18.160	71HSKA063CT1816	160	134	100	1.8	2					
HSK-A63 CT20.100	71HSKA063CT2010	100	74	-	1.4	1					
HSK-A63 CT20.120	71HSKA063CT2012	120	94	41 / 51	1.3						
HSK-A63 CT20.160	71HSKA063CT2016	160	134	100	1.8	2					
HSK-A63 CT25.120	71HSKA063CT2512	120	94	-	1.8	1					
HSK-A63 CT25.160	71HSKA063CT2516	160	134	47 / 57	2.5						

248



240



223



- SHRINK FIT CHUCKS
- ШПИНДЕЛИ С ТЕРМИЧЕСКИМ КЛИНОВЫМ СОЕДИНЕНИЕМ
- WRZĘCIONA Z TERMICZNYM POŁĄCZENIEM KLINOWYM
- ULOŽENÍ LISOVANÉ ZA TEPLA
- SIKI GEÇME MANDRENLERİ

DIN 69893 HSK-A100

CT

0.003

RPM 12.000

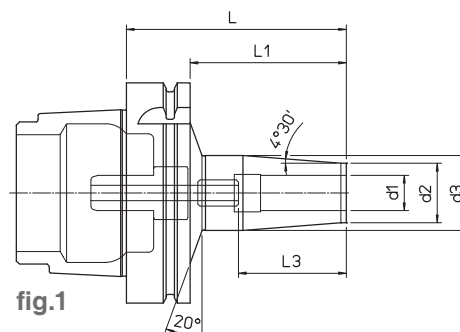


fig.1

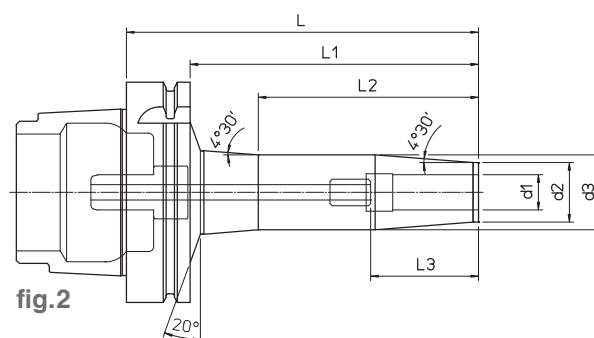


fig.2

- Supplied with coolant tube
- Содержит соединение для хладагента
- Wyposażona w złączkę do cieczy chłodzącej
- Dodávané s chladičím potrubím
- Soğutma sıvısı borusuyla tedarik edilir

213

HSK-A	REF.	CODE	d1	d2	d3	L	L1	L2	L3	kg	fig.
100	HSK-A100 CT06.85	71HСКА100CT0608	6	21	27	85	56	-	26 / 36	2.2	1
	HSK-A100 CT06.120	71HСКА100CT0612				120	91	-		2.4	
	HSK-A100 CT06.160	71HСКА100CT0616				160	131	100		2.5	
	HSK-A100 CT08.85	71HСКА100CT0808	8	24	32	85	56	-	31 / 41	2.2	1
	HSK-A100 CT08.120	71HСКА100CT0812				120	91	-		2.4	
	HSK-A100 CT08.160	71HСКА100CT0816				160	131	100		2.5	
	HSK-A100 CT10.90	71HСКА100CT1009	10	24	32	90	61	-	36 / 46	2.3	1
	HSK-A100 CT10.120	71HСКА100CT1012				120	91	-		2.5	
	HSK-A100 CT10.160	71HСКА100CT1016				160	131	100		2.7	
	HSK-A100 CT12.95	71HСКА100CT1209	12	27	34	95	66	-	39 / 49	2.3	1
	HSK-A100 CT12.120	71HСКА100CT1212				120	91	-		2.5	
	HSK-A100 CT12.160	71HСКА100CT1216				160	134	100		2.7	
	HSK-A100 CT14.95	71HСКА100CT1409	14	33	42	95	66	-	41 / 51	2.3	1
	HSK-A100 CT14.120	71HСКА100CT1412				120	91	-		2.5	
	HSK-A100 CT14.160	71HСКА100CT1416				160	131	100		2.8	
	HSK-A100 CT16.100	71HСКА100CT1610	16	44	53	100	71	-	47 / 57	2.3	1
	HSK-A100 CT16.120	71HСКА100CT1612				120	91	-		2.5	
	HSK-A100 CT16.160	71HСКА100CT1616				160	131	100		2.8	
	HSK-A100 CT18.100	71HСКА100CT1810	18	44	53	100	71	-	51 / 61	2.5	1
	HSK-A100 CT18.120	71HСКА100CT1812				120	91	-		2.8	
HSK-A100 CT18.160	71HСКА100CT1816	160				131	100	3.1			
HSK-A100 CT20.120	71HСКА100CT2012	20	44	53	120	91	-	41 / 51	2.7	1	
HSK-A100 CT20.160	71HСКА100CT2016				160	131	100		3.1		
HSK-A100 CT25.120	71HСКА100CT2512	25	44	53	120	91	-	47 / 57	3.1	1	
HSK-A100 CT25.160	71HСКА100CT2516				160	131	100		3.8		
HSK-A100 CT32.120	71HСКА100CT3212	32	44	53	120	91	-	51 / 61	2.9	1	
HSK-A100 CT32.160	71HСКА100CT3216				160	131	100		3.5		



- SHRINK FIT CHUCKS
- ШПИНДЕЛИ С ТЕРМИЧЕСКИМ КЛИНОВЫМ СОЕДИНЕНИЕМ
- WRZECIONA Z TERMICZNYM POŁĄCZENIEM KLINOWYM
- ULOŽENÍ LISOVANÉ ZA TEPLA
- SIKI GEÇME MANDRENLERİ

ISO 26623-1 PSC63

CT

↗ 0.003

RPM 25.000

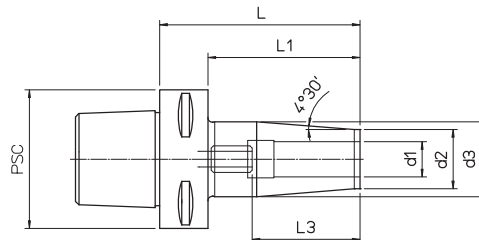


fig.1

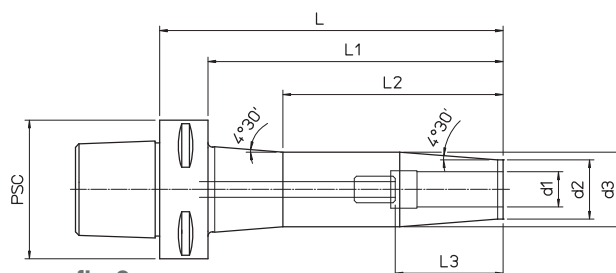


fig.2

214

PSC	REF.	CODE	d1	d2	d3	L	L1	L2	L3	kg	fig.
63	PSC 63 CT06.80	71PSC-063CT0608	6	21	27	80	55	-	26 / 36	0.8	1
	PSC 63 CT06.120	71PSC-063CT0612				120	95			1	
	PSC 63 CT06.160	71PSC-063CT0616				160	135			100	
	PSC 63 CT08.80	71PSC-063CT0808	8	21	27	80	55	-	26 / 36	0.8	1
	PSC 63 CT08.120	71PSC-063CT0812				120	95			1	
	PSC 63 CT08.160	71PSC-063CT0816				160	135			100	
	PSC 63 CT10.80	71PSC-063CT1008	10	24	32	80	55	-	31 / 41	0.9	1
	PSC 63 CT10.120	71PSC-063CT1012				120	95			1.1	
	PSC 63 CT10.160	71PSC-063CT1016				160	135			100	
	PSC 63 CT12.85	71PSC-063CT1208	12	24	32	85	60	-	36 / 46	0.9	1
	PSC 63 CT12.120	71PSC-063CT1212				120	95			1.1	
	PSC 63 CT12.160	71PSC-063CT1216				160	135			100	
	PSC 63 CT14.85	71PSC-063CT1408	14	27	34	85	60	-	36 / 46	0.9	1
	PSC 63 CT14.120	71PSC-063CT1412				120	95			1.1	
	PSC 63 CT14.160	71PSC-063CT1416				160	135			100	
	PSC 63 CT16.85	71PSC-063CT1608	16	27	34	85	60	-	39 / 49	0.9	1
	PSC 63 CT16.120	71PSC-063CT1612				120	95			1.1	
	PSC 63 CT16.160	71PSC-063CT1616				160	135			100	
	PSC 63 CT18.90	71PSC-063CT1809	18	33	42	90	65	-	39 / 49	1.1	1
	PSC 63 CT18.120	71PSC-063CT1812				120	95			1.4	
PSC 63 CT18.160	71PSC-063CT1816	160				135	100			1.8	
PSC 63 CT20.90	71PSC-063CT2009	20	33	42	90	65	-	41 / 51	1.4	1	
PSC 63 CT20.120	71PSC-063CT2012				120	95			1.3		
PSC 63 CT20.160	71PSC-063CT2016				160	135			100		1.8
PSC 63 CT25.120	71PSC-063CT2512	25	44	53	120	95	-	47 / 57	1.4	1	
PSC 63 CT25.160	71PSC-063CT2516				160	135			1.8		

252

223



- SHRINK FIT CHUCKS
- ШПИНДЕЛИ С ТЕРМИЧЕСКИМ КЛИНОВЫМ СОЕДИНЕНИЕМ
- WRZĘCIONA Z TERMICZNYM POŁĄCZENIEM KLINOWYM
- ULOŽENÍ LISOVANÉ ZA TEPLA
- SIKI GEÇME MANDRENLERİ

ISO 26623-1 PSC80

CT

0.003

RPM 12.000

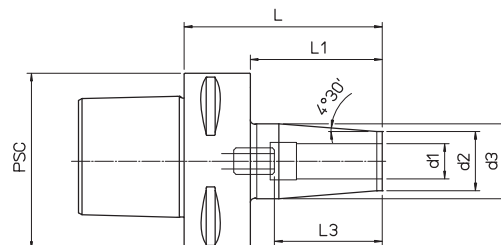


fig.1

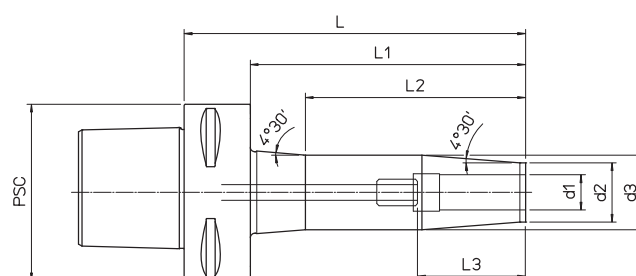


fig.2

215

PSC	REF.	CODE	d1	d2	d3	L	L1	L2	L3	kg	fig.			
80	PSC 80 CT06.80	71PSC-080CT0608	6	21	27	80	50	-	26 / 36	2.2	1			
	PSC 80 CT06.120	71PSC-080CT0612				120	90	-		2.4				
	PSC 80 CT06.160	71PSC-080CT0616				160	130	100		2.5		2		
	PSC 80 CT08.80	71PSC-080CT0808	8			24	32	80		50	-	31 / 41	2.2	1
	PSC 80 CT08.120	71PSC-080CT0812						120		90	-		2.4	
	PSC 80 CT08.160	71PSC-080CT0816						160		130	100		2.5	
	PSC 80 CT10.90	71PSC-080CT1009	10	27	34			90	60	-	36 / 46		2.3	1
	PSC 80 CT10.120	71PSC-080CT1012						120	90	-			2.5	
	PSC 80 CT10.160	71PSC-080CT1016						160	130	100			2.7	
	PSC 80 CT12.90	71PSC-080CT1209	12			33	42	90	60	-		39 / 49	2.3	1
	PSC 80 CT12.120	71PSC-080CT1212						120	90	-			2.5	
	PSC 80 CT12.160	71PSC-080CT1216						160	130	100			2.7	
	PSC 80 CT14.90	71PSC-080CT1409	14	44	53			90	60	-	41 / 51		2.3	1
	PSC 80 CT14.120	71PSC-080CT1412						120	90	-			2.5	
	PSC 80 CT14.160	71PSC-080CT1416						160	130	100			2.8	
	PSC 80 CT16.90	71PSC-080CT1609	16			51	61	90	60	-		47 / 57	2.3	1
	PSC 80 CT16.120	71PSC-080CT1612						120	90	-			2.5	
	PSC 80 CT16.160	71PSC-080CT1616						160	130	100			2.8	
	PSC 80 CT18.95	71PSC-080CT1809	18	58	71			95	65	-	51 / 61		2.5	1
	PSC 80 CT18.120	71PSC-080CT1812						120	90	-			2.8	
	PSC 80 CT18.160	71PSC-080CT1816						160	130	100			3.1	
	PSC 80 CT20.95	71PSC-080CT2009	20			66	85	95	65	-		57 / 67	2.5	1
	PSC 80 CT20.120	71PSC-080CT2012						120	90	-			2.8	
	PSC 80 CT20.160	71PSC-080CT2016						160	130	100			3.1	
PSC 80 CT25.120	71PSC-080CT2512	25	74	100	120			90	-	63 / 73	3.1		1	
PSC 80 CT25.160	71PSC-080CT2516				160			130	100		3.8			2
PSC 80 CT32.120	71PSC-080CT3212	32			82			110	120		90		-	71 / 81
PSC 80 CT32.160	71PSC-080CT3216					160	130		100		3.5	2		



223 252
UNI
ISO
DIN
MAS-BT

- SHRINK FIT CHUCKS
- ШПИНДЕЛИ С ТЕРМИЧЕСКИМ КЛИНОВЫМ СОЕДИНЕНИЕМ
- WRZECIONA Z TERMICZNYM POŁĄCZENIEM KLINOWYM
- ULOŽENÍ LISOVANÉ ZA TEPLA
- SIKI GEÇME MANDRENLERİ

DIN 69871 AD+B40

CT

↗ 0.003

RPM 25.000

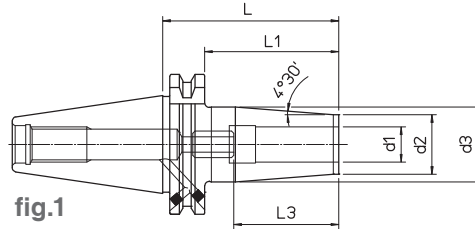


fig.1

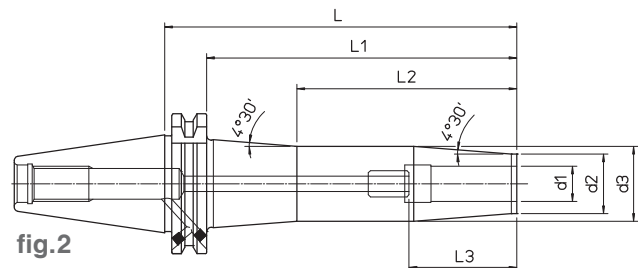


fig.2

DIN	REF.	CODE	d1	d2	d3	L	L1	L2	L3	kg	fig.
40	DIN69871-AD+B40 CT06.80	71DIN-B40CT0608	6	21	27	80	61	-	26 / 36	0.8	1
	DIN69871-AD+B40 CT06.120	71DIN-B40CT0612				120	101	1			
	DIN69871-AD+B40 CT06.160	71DIN-B40CT0616				160	141	100		1.2	
	DIN69871-AD+B40 CT08.80	71DIN-B40CT0808	8	24	32	80	61	-	31 / 41	0.8	1
	DIN69871-AD+B40 CT08.120	71DIN-B40CT0812				120	101	1			
	DIN69871-AD+B40 CT08.160	71DIN-B40CT0816				160	141	100		1.2	
	DIN69871-AD+B40 CT10.80	71DIN-B40CT1008	10	27	34	80	61	-	36 / 46	0.9	1
	DIN69871-AD+B40 CT10.120	71DIN-B40CT1012				120	101	1			
	DIN69871-AD+B40 CT10.160	71DIN-B40CT1016				160	141	100		1.4	
	DIN69871-AD+B40 CT12.80	71DIN-B40CT1208	12	33	42	80	61	-	39 / 49	0.9	1
	DIN69871-AD+B40 CT12.120	71DIN-B40CT1212				120	101	1			
	DIN69871-AD+B40 CT12.160	71DIN-B40CT1216				160	141	100		1.3	
	DIN69871-AD+B40 CT14.80	71DIN-B40CT1408	14	42	53	80	61	-	41 / 51	0.9	1
	DIN69871-AD+B40 CT14.120	71DIN-B40CT1412				120	101	1			
	DIN69871-AD+B40 CT14.160	71DIN-B40CT1416				160	141	100		1.4	
	DIN69871-AD+B40 CT16.80	71DIN-B40CT1608	16	44	53	80	61	-	47 / 57	0.9	1
	DIN69871-AD+B40 CT16.120	71DIN-B40CT1612				120	101	1			
	DIN69871-AD+B40 CT16.160	71DIN-B40CT1616				160	141	100		1.4	
	DIN69871-AD+B40 CT18.80	71DIN-B40CT1808	18	44	53	80	61	-	47 / 57	1.1	1
	DIN69871-AD+B40 CT18.120	71DIN-B40CT1812				120	101	1			
	DIN69871-AD+B40 CT18.160	71DIN-B40CT1816				160	141	100		1.4	
	DIN69871-AD+B40 CT20.80	71DIN-B40CT2008	20	44	53	80	61	-	47 / 57	1.4	1
	DIN69871-AD+B40 CT20.120	71DIN-B40CT2012				120	101	1			
	DIN69871-AD+B40 CT20.160	71DIN-B40CT2016				160	141	100		1.8	
DIN69871-AD+B40 CT25.100	71DIN-B40CT2510	25	44	53	100	81	-	47 / 57	1.8	1	

249



240



223



- SHRINK FIT CHUCKS
- ШПИНДЕЛИ С ТЕРМИЧЕСКИМ КЛИНОВЫМ СОЕДИНЕНИЕМ
- WRZĘCIONA Z TERMICZNYM POŁĄCZENIEM KLINOWYM
- ULOŽENÍ LISOVANÉ ZA TEPLA
- SIKI GEÇME MANDRENLERİ

DIN 69871 AD+B50

CT

↗ 0.003

RPM 12.000

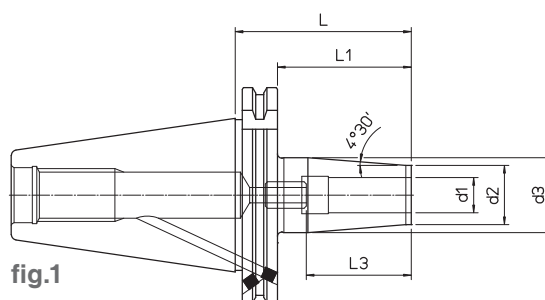


fig.1

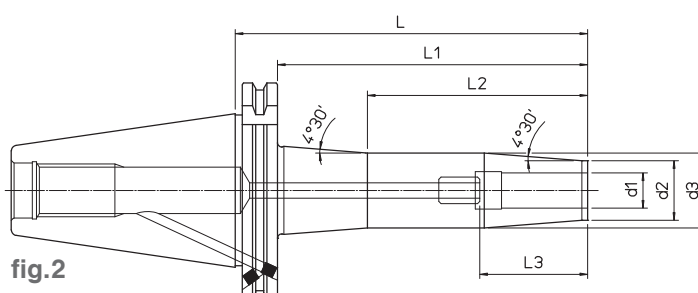
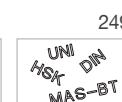


fig.2

217

DIN	REF.	CODE	d ₁	d ₂	d ₃	L	L ₁	L ₂	L ₃	kg	fig.
50	DIN69871-AD+B50 CT06.80	71DIN-B50CT0608	6	21	27	80	61	-	26 / 36	2.2	1
	DIN69871-AD+B50 CT06.120	71DIN-B50CT0612				120	101	-		2.4	
	DIN69871-AD+B50 CT06.160	71DIN-B50CT0616				160	141	100		2.5	
	DIN69871-AD+B50 CT08.80	71DIN-B50CT0808	8	21	27	80	61	-	26 / 36	2.2	1
	DIN69871-AD+B50 CT08.120	71DIN-B50CT0812				120	101	-		2.4	
	DIN69871-AD+B50 CT08.160	71DIN-B50CT0816				160	141	100		2.5	
	DIN69871-AD+B50 CT10.80	71DIN-B50CT1008	10	24	32	80	61	-	31 / 41	2.3	1
	DIN69871-AD+B50 CT10.120	71DIN-B50CT1012				120	101	-		2.5	
	DIN69871-AD+B50 CT10.160	71DIN-B50CT1016				160	141	100		2.7	
	DIN69871-AD+B50 CT12.80	71DIN-B50CT1208	12	24	32	80	61	-	36 / 46	2.3	1
	DIN69871-AD+B50 CT12.120	71DIN-B50CT1212				120	101	-		2.5	
	DIN69871-AD+B50 CT12.160	71DIN-B50CT1216				160	141	100		2.7	
	DIN69871-AD+B50 CT14.80	71DIN-B50CT1408	14	27	34	80	61	-	39 / 49	2.3	1
	DIN69871-AD+B50 CT14.120	71DIN-B50CT1412				120	101	-		2.5	
	DIN69871-AD+B50 CT14.160	71DIN-B50CT1416				160	141	100		2.8	
	DIN69871-AD+B50 CT16.80	71DIN-B50CT1608	16	27	34	80	61	-	39 / 49	2.3	1
	DIN69871-AD+B50 CT16.120	71DIN-B50CT1612				120	101	-		2.5	
	DIN69871-AD+B50 CT16.160	71DIN-B50CT1616				160	141	100		2.8	
	DIN69871-AD+B50 CT18.80	71DIN-B50CT1808	18	33	42	80	61	-	41 / 51	2.5	1
	DIN69871-AD+B50 CT18.120	71DIN-B50CT1812				120	101	-		2.8	
	DIN69871-AD+B50 CT18.160	71DIN-B50CT1816				160	141	100		3.1	
	DIN69871-AD+B50 CT20.80	71DIN-B50CT2008	20	33	42	80	61	-	41 / 51	2.5	1
	DIN69871-AD+B50 CT20.120	71DIN-B50CT2012				120	101	-		2.8	
	DIN69871-AD+B50 CT20.160	71DIN-B50CT2016				160	141	100		3.1	
DIN69871-AD+B50 CT25.120	71DIN-B50CT2512	25	44	53	120	101	-	47 / 57	3.1	1	
DIN69871-AD+B50 CT25.160	71DIN-B50CT2516	160			141	100	3.8		2		
DIN69871-AD+B50 CT32.120	71DIN-B50CT3212	120			101	-	2.9		1		
DIN69871-AD+B50 CT32.160	71DIN-B50CT3216	160	141	100	3.5	2					



- SHRINK FIT CHUCKS
- ШПИНДЕЛИ С ТЕРМИЧЕСКИМ КЛИНОВЫМ СОЕДИНЕНИЕМ
- WRZECIONA Z TERMICZNYM POŁĄCZENIEM KLINOWYM
- ULOŽENÍ LISOVANÉ ZA TEPLA
- SIKI GEÇME MANDRENLERİ

MAS 403 BT40 AD+B
CT

↗ 0.003

RPM 25.000

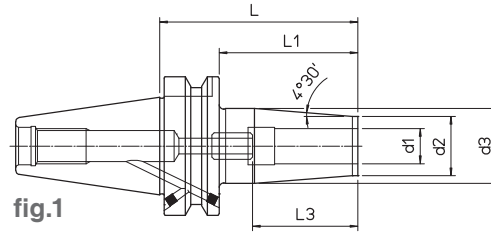


fig.1

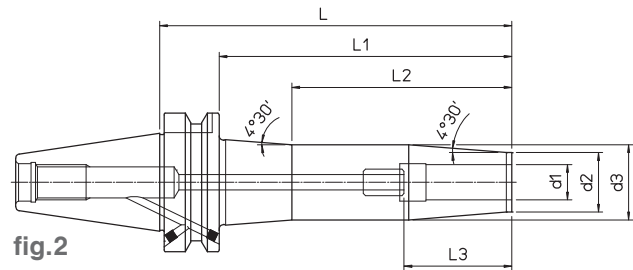


fig.2

218

DIN	REF.	CODE	d ₁	d ₂	d ₃	L	L ₁	L ₂	L ₃	kg	fig.
40	MAS403 BT40-AD+B CT06.90	71MBT-B40CT0609	6	21	27	90	63	-	26 / 36	0.8	1
	MAS403 BT40-AD+B CT06.120	71MBT-B40CT0612				120	93	1.2			
	MAS403 BT40-AD+B CT06.160	71MBT-B40CT0616				160	133	100		1.2	
	MAS403 BT40-AD+B CT08.90	71MBT-B40CT0809	8	24	32	90	63	-	31 / 41	0.8	1
	MAS403 BT40-AD+B CT08.120	71MBT-B40CT0812				120	93	1.1			
	MAS403 BT40-AD+B CT08.160	71MBT-B40CT0816				160	133	100		1.2	
	MAS403 BT40-AD+B CT10.90	71MBT-B40CT1009	10	27	34	90	63	-	36 / 46	0.9	1
	MAS403 BT40-AD+B CT10.120	71MBT-B40CT1012				120	93	1.1			
	MAS403 BT40-AD+B CT10.160	71MBT-B40CT1016				160	133	100		1.4	
	MAS403 BT40-AD+B CT12.90	71MBT-B40CT1209	12	33	42	90	63	-	39 / 49	0.9	1
	MAS403 BT40-AD+B CT12.120	71MBT-B40CT1212				120	93	1.1			
	MAS403 BT40-AD+B CT12.160	71MBT-B40CT1216				160	133	100		1.3	
	MAS403 BT40-AD+B CT14.90	71MBT-B40CT1409	14	44	53	90	63	-	41 / 51	0.9	1
	MAS403 BT40-AD+B CT14.120	71MBT-B40CT1412				120	93	1.1			
	MAS403 BT40-AD+B CT14.160	71MBT-B40CT1416				160	133	100		1.4	
	MAS403 BT40-AD+B CT16.90	71MBT-B40CT1609	16	47	57	90	63	-	47 / 57	0.9	1
	MAS403 BT40-AD+B CT16.120	71MBT-B40CT1612				120	93	1.1			
	MAS403 BT40-AD+B CT16.160	71MBT-B40CT1616				160	133	100		1.4	
	MAS403 BT40-AD+B CT18.90	71MBT-B40CT1809	18	50	60	90	63	-	-	1.1	1
	MAS403 BT40-AD+B CT18.120	71MBT-B40CT1812				120	93	1.4			
MAS403 BT40-AD+B CT18.160	71MBT-B40CT1816	160				133	100	1.8			
MAS403 BT40-AD+B CT20.90	71MBT-B40CT2009	20	53	63	90	63	-	-	1.4	1	
MAS403 BT40-AD+B CT20.120	71MBT-B40CT2012				120	93	1.3				
MAS403 BT40-AD+B CT20.160	71MBT-B40CT2016				160	133	100		1.8		
MAS403 BT40-AD+B CT25.100	71MBT-B40CT2510	25	44	53	100	73	-	47 / 57	1.8	1	

249



240



223



- SHRINK FIT CHUCKS
- ШПИНДЕЛИ С ТЕРМИЧЕСКИМ КЛИНОВЫМ СОЕДИНЕНИЕМ
- WRZĘCIONA Z TERMICZNYM POŁĄCZENIEM KLINOWYM
- ULOŽENÍ LISOVANÉ ZA TEPLA
- SIKI GEÇME MANDRENLERİ

MAS 403 BT50 AD+B

CT

↗ 0.003

RPM 12.000

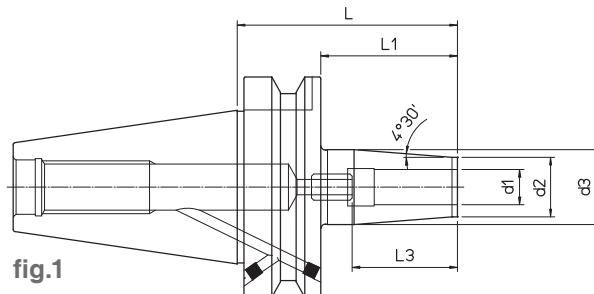


fig.1

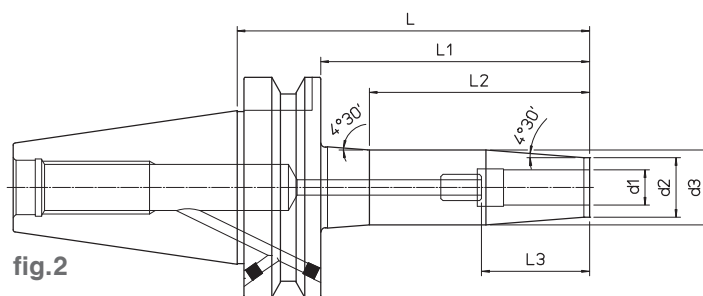


fig.2

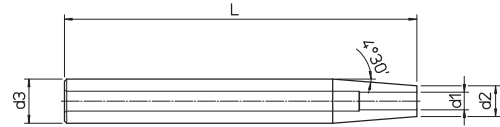
219

DIN	REF.	CODE	d1	d2	d3	L	L1	L2	L3	kg	fig.
50	MAS403 BT50-AD+B CT06.100	71MBT-B50CT0610	6	21	27	100	62	-	26 / 36	2.2	1
	MAS403 BT50-AD+B CT06.160	71MBT-B50CT0616				160	122	100		2.5	2
	MAS403 BT50-AD+B CT08.100	71MBT-B50CT0810	8	24	32	100	62	-	31 / 41	2.2	1
	MAS403 BT50-AD+B CT08.160	71MBT-B50CT0816				160	122	100		2.5	2
	MAS403 BT50-AD+B CT10.100	71MBT-B50CT1010	10	27	34	100	62	-	36 / 46	2.3	1
	MAS403 BT50-AD+B CT10.160	71MBT-B50CT1016				160	122	100		2.7	2
	MAS403 BT50-AD+B CT12.100	71MBT-B50CT1210	12	33	42	100	62	-	39 / 49	2.3	1
	MAS403 BT50-AD+B CT12.160	71MBT-B50CT1216				160	122	100		2.7	2
	MAS403 BT50-AD+B CT14.100	71MBT-B50CT1410	14	44	53	100	62	-	41 / 51	2.3	1
	MAS403 BT50-AD+B CT14.160	71MBT-B50CT1416				160	122	100		2.8	2
	MAS403 BT50-AD+B CT16.100	71MBT-B50CT1610	16	33	42	100	62	-	47 / 57	2.3	1
	MAS403 BT50-AD+B CT16.160	71MBT-B50CT1616				160	122	100		2.8	2
	MAS403 BT50-AD+B CT18.100	71MBT-B50CT1810	18	44	53	100	62	-	51 / 61	2.5	1
	MAS403 BT50-AD+B CT18.160	71MBT-B50CT1816				160	122	100		3.1	2
	MAS403 BT50-AD+B CT20.120	71MBT-B50CT2012	20	33	42	120	82	-	41 / 51	2.8	1
	MAS403 BT50-AD+B CT20.160	71MBT-B50CT2016				160	122	100		3.1	2
	MAS403 BT50-AD+B CT25.120	71MBT-B50CT2512	25	44	53	120	82	-	47 / 57	3.1	1
	MAS403 BT50-AD+B CT25.160	71MBT-B50CT2516				160	122	100		3.8	2
	MAS403 BT50-AD+B CT32.120	71MBT-B50CT3212	32	44	53	120	82	-	51 / 61	2.9	1
	MAS403 BT50-AD+B CT32.160	71MBT-B50CT3216				160	122	100		3.5	2



- SHRINK FIT EXTENSIONS
- УДЛИНИТЕЛИ С ТЕРМИЧЕСКИМ КЛИНОВЫМ СОЕДИНЕНИЕМ
- PRZEŁUŻACZE O TERMICZNYM POŁĄCZENIU KLINOWYM
- PRODLOUŽENÍ ULOŽENÍ LISOVANÝCH ZA TEPLA
- SIKI GEÇME UZATMALARI

PR CT N



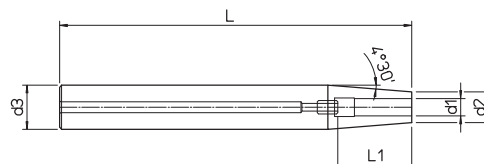
220

REF.	CODE	d1	d2	d3	L	kg
PR.CT.N D12.03.160	49DC11612030	3	8	12	160	0.09
PR.CT.N D12.04.160	49DC11612040	4				
PR.CT.N D16.03.160	49DC11616030	3	10	16		0.14
PR.CT.N D16.04.160	49DC11616040	4				
PR.CT.N D16.05.160	49DC11616050	5	12	16		0.15
PR.CT.N D16.06.160	49DC11616060	6				
PR.CT.N D16.08.160	49DC11616080	8	14	20		0.16
PR.CT.N D20.05.160	49DC11620050	5				
PR.CT.N D20.06.160	49DC11620060	6	16	20		0.27
PR.CT.N D20.08.160	49DC11620080	8				
PR.CT.N D20.10.160	49DC11620100	10	18	20		0.26
PR.CT.N D20.12.160	49DC11620120	12				



- SHRINK FIT EXTENSIONS WITH AXIAL ADJUSTMENT
- УДЛИНИТЕЛИ С ТЕРМИЧЕСКИМ КЛИНОВЫМ СОЕДИНЕНИЕМ С ОСЕВОЙ РЕГУЛИРОВКОЙ
- PRZEDŁUŻACZE O TERMICZNYM POŁĄCZENIU KLINOWYM Z REGULACJĄ OSIOWĄ
- PRODLUŽENÍ ULOŽENÍ LISOVANÝCH ZA TEPLA S AXIÁLNÍ ÚPRAVOU
- EKSENEL AYARLI SIKI GEÇME UZATMALARI

PR CT R



221

REF.	CODE	d1	d2	d3	L	L1	kg
PR.CT.R D16.06.130	49DC21316060	6	10	16	130	26 / 36	0.18
PR.CT.R D16.06.160	49DC21616060				160		0.17
PR.CT.R D20.06.130	49DC21320060	8	14	20	130	22 / 32	0.20
PR.CT.R D20.08.130	49DC21320080				160		0.25
PR.CT.R D20.06.160	49DC21620060	6	14	20	160	26 / 36	0.33
PR.CT.R D20.08.160	49DC21620080	8					0.32
PR.CT.R D25.10.130	49DC21325100	10	20	25	130	31 / 41	0.40
PR.CT.R D25.12.130	49DC21325120	12					0.37
PR.CT.R D25.16.130	49DC21325160	16	22	25	160	36 / 46	0.32
PR.CT.R D25.08.160	49DC21625080	8					0.53
PR.CT.R D25.10.160	49DC21625100	10	20	25	160	31 / 41	0.51
PR.CT.R D25.12.160	49DC21625120	12					0.48
PR.CT.R D25.14.160	49DC21625140	14	22	25	160	36 / 46	0.47
PR.CT.R D25.16.160	49DC21625160	16					0.43
PR.CT.R D25.08.200	49DC22025080	8	19	20	200	26 / 36	0.67
PR.CT.R D25.10.200	49DC22025100	10	20				0.64
PR.CT.R D25.12.200	49DC22025120	12	22	25	200	31 / 41	0.60
PR.CT.R D25.16.200	49DC22025160	16					0.52
PR.CT.R D32.16.160	49DC21632160	18	27	32	160	39 / 49	0.78
PR.CT.R D32.18.160	49DC21632180						20
PR.CT.R D32.20.160	49DC21632200	20	27	32	160	41 / 51	0.67
PR.CT.R D32.16.200	49DC22032160	16					1.81
PR.CT.R D32.20.200	49DC22032200	20	27	32	200	39 / 49	0.87
							41 / 51



- SEALING DEVICE FOR HIGH PRESSURE COOLANT SUPPLY
- УПЛОТНИТЕЛЬНОЕ УСТРОЙСТВО ДЛЯ ХЛАДАГЕНТА ПОД ВЫСОКИМ ДАВЛЕНИЕМ
- URZĄDZENIA USZCZELNIAJĄCE CIĘCZ CHŁODZĄCĄ POD WYSOKIM CIŚNIENIEM
- TĚSNICÍ ZAŘÍZENÍ PRO PŘÍVOD VYSOKOTLAKÉHO CHLADIVA
- YÜKSEK BASINÇLI SOĞUTMA SIVISI BESLEMESİ İÇİN SIZDIRMAZLIK ELEMANI

FORCE GH - VT

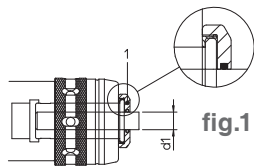


fig.1

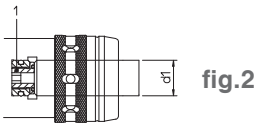


fig.2

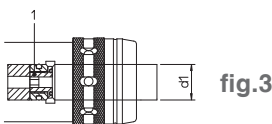
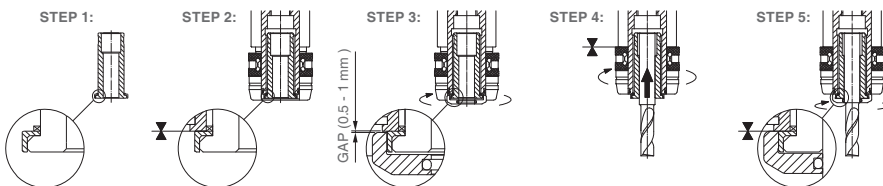


fig.3

fig.	REF.	CODE1	d1
1	GH 20 MONOforce 20 HSK63 MHD'50 / DIN/BT-40-50 PSC 63 - 80	382042020061	6
		382042020081	8
		382042020101	10
		382042020121	12
		382042020141	14
382042020161	16		
2	VT 20.20 MONOforce 20 DIN/BT-40-50 HSK63-100 PSC 63-80	382042020201	20
1	GH 32 MONOforce 32 DIN/BT-40-50 / HSK63-100 MHD'63 PSC 63-80	382042032061	6
		382042032081	8
		382042032101	10
		382042032121	12
		382042032141	14
		382042032161	16
		382042032181	18
		382042032201	20
382042032251	25		
2	VT 32.32 MONOforce 32 DIN/BT-40 HSK63-100 PSC 63-80	382042032321	32
3	VT 32.32.100 MONOforce 32 DIN/BT-50	382042032322	32



- SETTING SCREW FOR INTERNAL COOLANT SUPPLY
- ЗАЖИМНЫЕ ВИНТЫ ПРОХОДА ХЛАДАГЕНТА
- ŚRUBA REGULUJĄCA PRZEPŁYW CIĘCZY CHŁODZĄCEJ
- NASTAVOVACÍ ŠROUB PRO INTERNÍ PŘÍVOD CHLADIVA
- DAHILI SOĞUTMA SIVISI BESLEMESİ İÇİN AYAR VIDASI

FORCE VCR

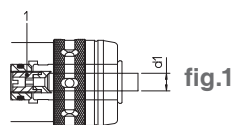


fig.1

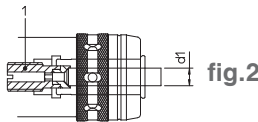
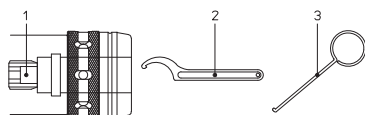


fig.2

fig.	REF.	CODE 1	d1
1	VCR 20 MONOforce 20 HSK63-100 MHD'50 PSC 63-80	382041020032	3 ~ 5
		382041020062	6 ~ 12
		382041020142	14 ~ 20
1	VCR 32 MONOforce 32 HSK63-100 MHD'63 PSC 63-80	382041032033	3 ~ 5
		382041032063	6 ~ 12
		382041032143	14 ~ 20
		382041032253	25 ~ 32
2	VCR 20 MONOforce 20 DIN/BT-40-50	382041020031	3 ~ 5
		382041020061	6 ~ 12
		382041020141	14 ~ 20
2	VCR 32 MONOforce 32 DIN/BT-40	382041032031	3 ~ 5
		382041032061	6 ~ 12
		382041032141	14 ~ 20
		382041032251	25 ~ 32
2	VCR 32 MONOforce 32 DIN/BT-50	382041032032	3 ~ 5
		382041032062	6 ~ 12
		382041032142	14 ~ 20
		382041032252	25 ~ 32



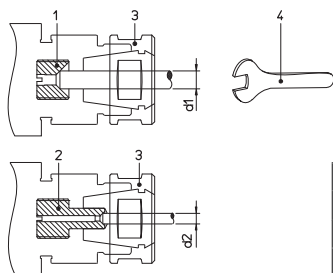
REF.	CODE 1	CODE 2	CODE 3
FORCE 12	200100191014	101500400028	201271600400
FORCE 20	200100191615	101500400050	
FORCE 32		101500400075	

FORCE



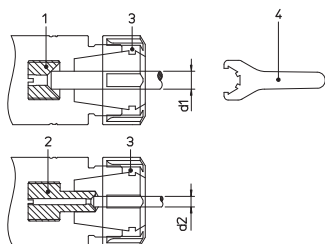
- ACCESSORIES AND SPARE PARTS
- ЗАПЧАСТИ И КОМПЛЕКТУЮЩИЕ
- WYPOSAŻENIE DODATKOWE I CZĘŚCI ZAMIENNE
- PŘÍSLUŠENSTVÍ A NÁHRADNÍ DÍLY
- AKSESUARLAR VE YEDEK PARÇALAR

TOPRUN - ER



REF.	CODE 1	d1	CODE 2	d2	CODE 3	CODE 4
ER 16	201082010001	5 ~ 10	201082010002	1 ~ 4	201041910001	201271502200
ER 25	201082018001	8 ~ 16	201082018002	2 ~ 7	201043010002	201271503400
ER 32	201082022001	8 ~ 20	201082022002	3 ~ 7	201044015001	201271504500

MONOd' - ER



REF.	CODE 1	d1	CODE 2	d2	CODE 3	CODE 4
ER 16 M	201082010001	5 ~ 10	201082010002	1 ~ 4	100451011600	101501001600
ER 25	201082018001	8 ~ 16	201082018002	2 ~ 7	100451032500	101501002501
ER 32	201082022001	8 ~ 20	201082022002	3 ~ 7	100451033200	101501003201
ER 40	201082028001	9 ~ 26	201082028002	4 ~ 8	100451034000	101501004001

MONOd' - WD

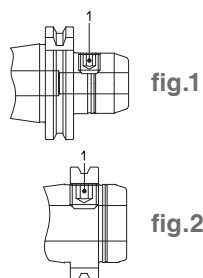
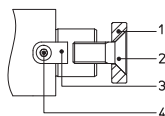


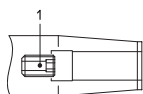
fig.	REF.	CODE 1	fig.	REF.	CODE 1
1	WD 06	200100190610	1	WD 20	200100191616
	WD 08	200100190810	2		200100191613
	WD 10	200100191010	1	WD 25	200100191820
	WD 12	200100191212	2		200100191821
	WD 14		1	WD 32	200100192020
	WD 16	WD 40			
	WD 18			200100191414	

MONOd' - PF



REF.	CODE 1	CODE 2	CODE 3	CODE 4
PF 16	201010085010	100101080025	201101800801	100051030008
PF 22	201010105030	100101100025	201101801002	100051040010
PF 27	201010125030	100101120030	201101801202	100051050012
PF 32	201010165020	100101160035	201101801402	100051060016

MONOd' CT



REF.	CODE 1	REF.	CODE 1
CT 06	200100190520	CT 16	200100191221
CT 08	200100190620	CT 18	
CT 10	200100190820	CT 20	200100191620
CT 12	200100191018	CT 25	
CT 14		CT 32	